

Classroom & Laboratory Safety

By Dr. Kohn

Science Dept.

Waterford WI



General Expectations

- **Ask if unsure. Report if unsure. Do not act if unsure.**
- **Follow Instructions.**
- **Know all safety precautions & equipment so that you can act if/when needed.**
- **Keep areas neat and clean with chairs pushed in in case of emergency.**
- **You are responsible for preventing accidents.**
- **Never handle an unknown substance. Ask first.**



General Expectations

- **Alert your instructor of all emergencies and wait for their response before taking action.**
- **Never eat or drink in the classroom.**
- **Wash your hands after handling anything potentially harmful.**
- **Never work alone in a room or lab.**
- **If there is an emergency, stop what you are doing and be prepared to assist.**



Eyewear

- **Eyewear is needed any time we have...**
 - Lab chemicals are being used
 - Glassware is being used
 - Substances are being heated
 - Open flames are present
 - Organs or other live tissues are being dissected
- **Eyeglasses do not count as eye protection.**



Gloves

- **Gloves are needed anytime we have...**
 - Lab chemicals are being used
 - Organs or other live tissues are being dissected
- **Replace any gloves with rips or tears.**
- **Tell your instructor if we are running low on gloves before they run out.**



Apparel & Footwear

- **When working with glass, lab chemicals, live tissue, or outdoors, closed-toed shoes are needed.**

- **Do not wear overly-loose clothing when performing a lab.**



- **Dress appropriately if we go outdoors.**



Eyes & Contact Lens

- **If you spill a liquid in your eye (chemical, blood, etc.), alert your instructor if you have contacts.**
 - Just because a spill in your eye does not hurt does not mean it is not causing damage.
 - Always rinse your eyes in an eyewash station in the event of a spill.
 - *Where is our eyewash station?*



Glassware

- **Always clean glassware before using if in doubt.**
- ***Hot* glass looks identical to *cold* glass.**
- **Test tubes should always be heated with the open end pointed away from people.**
- **Never use chipped, dirty, or broken glass.**



Sharps

- **Always carry sharp objects securely with the sharp end pointed down.**
 - Never try to catch a falling sharp object.
 - Move away as it falls while alerting everyone nearby.

- **Always cut away from your body.**



Heat & Flames

- **Glass can shatter when heated and gas flames can have flare-ups – always use eye protection when heating or burning something.**
- **Never leave a burner or flame unattended. Always have a partner.**
- **Long or loose hair or clothing must be tied back.**
- ***Where is our fire extinguisher?***



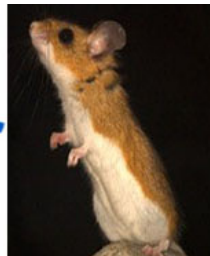
Laboratory Chemicals

- **Assume every chemical can be dangerous. Always read the side of the bottle before using a lab chemical.**
- **Once it's out it stays out - never return used chemicals back into a container.**
- **Always turn on a faucet *before* dumping a chemical**
 - Never add water to acid.
- **Only the instructor should have access to chemical supply areas.**
- **If you spill a chemical on your skin or in your eyes, immediately flush with water while alerting your instructor.**
- ***Where is our nearest chemical shower?***



Animals

- **All animals have the potential to carry serious disease.**
- **Always wash your hands after handling animals**
- **Alert the instructor of any loose animals and wait for their response before taking action.**
- **Never work with animals alone.**
- **Humane treatment of animals is required to be in this classroom.**



Organ/Tissue Dissection

- **Gloves, goggles, and aprons/coats are needed whenever handling organs or tissue.**
- **Know how organs or tissue should be disposed of before beginning.**
- **If a fluid gets into a mucus membrane (mouth, nose, eyes), immediately flush with lots of water.**



EMERGENCY RESPONSE PROTOCOLS

General Principles

- **Alert your instructor first.**
- **If additional help is needed, call “0” on the phone **AND** get a neighboring instructor to assist.**
 - After school hours, dial 8-911.
- **Assist only if needed or requested.**
- **Stay safe and out of harm’s way.**

A red rectangular sign with rounded corners and a white border, set against a light blue background. The sign contains the text 'IN CASE OF EMERGENCY' in white, bold, uppercase letters.

**IN CASE OF
EMERGENCY**

Spilled Chemical/Broken Glass

- **If there is broken glass or a chemical spill, first alert the instructor.**
 - Next stand guard at a safe distance while alerting everyone else to prevent another student from being exposed.
 - Be prepared to assist if the instructor asks.
- **Do not pick up broken glass with your bare hands.**
 - Leave the room if there are chemical fumes.
 - Do not wait to flush with water if you spill a chemical on your skin.



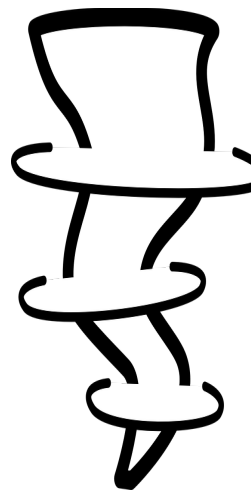
Fire

- **If a fire breaks out, alert the instructor before anything else.**
- **If a fire alarm goes off, stop what you are doing and immediately leave the classroom.**
 - Exit the main classroom door, turn left, go down the stairway, and exit the nearest door.
 - Stay together! We must take attendance.
 - Do not leave your class to find someone else. Stay with your instructor.



Tornado

- **If a tornado watch is issued, keep doing as you were before but remain prepared.**
 - This only means conditions are favorable for a tornado.
- **If there is a tornado warning, *immediately* stop what you are doing, leave the room, turn left, and go downstairs.**
 - Do not wait or hesitate – a tornado warning means a tornado is already on the ground.
 - Cover the back of your head and neck with your hands and duck forward.



Violent Critical Incident (Intruder)

- **A.L.I.C.E. (non-sequential)**

- Alert - First awareness of danger; overcome denial and doubt.
- Lockdown - Secure door, create barricades, spread out, prepare to evacuate/counter, & communicate.
- Inform - Alert law enforcement, etc. if safe to do so
- Counter - Physical actions that interrupt the intruder, making it impossible to aim (only if in immediate danger)
- Evacuate - Remove yourself from danger as soon as it is safe to do so and go to a safe area/rally point.
 - Keep your hands up & visible if you see police; do not scream or ask questions.

A.L.I.C.E.

Allergic Reaction

- **It is your responsibility to alert the instructor about any allergies you may have and any time your allergies are a problem.**
- **If you have a need for an Epi-pen, state this immediately and explain where it is.**
- **If another student is having an allergic reaction, stop what you are doing and be prepared to assist.**



Choking

- **If someone is choking, stop what you are doing and alert the instructor.**
- **Seek additional help if needed (by phone and/or in a neighboring classroom).**
- **Be prepared to assist the instructor.**



Seizure

- **If a student or instructor is having a seizure, push away anything they might strike with their body.**
- **Protect their head with a sweatshirt, backpack, or other padding.**
- **Do not try to hold down their body – allow them to flail freely.**
- **Be prepared to seek assistance from another instructor or via phone.**



Unconsciousness

- **Unconsciousness is always life threatening.**
 - Seek immediate assistance from the instructor, main office, and neighboring instructors if someone becomes unconscious.
- **Be prepared to check the CBAs –**
 - 1) Circulation (Do they have a pulse? Are they turning blue?).
 - 2) Breathing (Look, listen, & feel for breathing).
 - 3) Airway (Is it clear?).





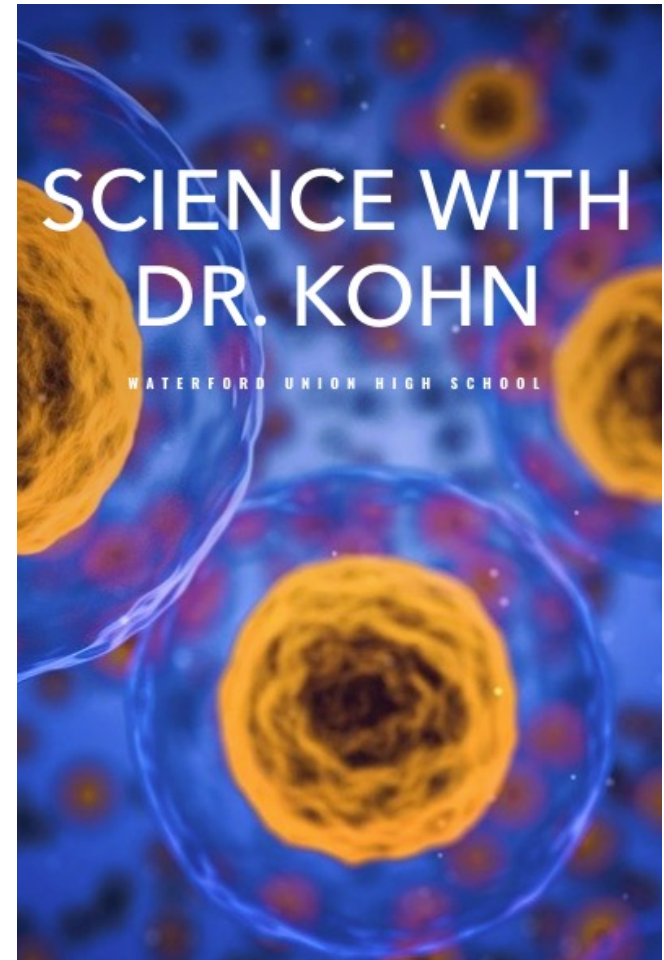
CLASSROOM PROCEDURES

Locate the following

- **Exits**
- **Fire Extinguishers**
- **Fire Blanket**
- **Eye Wash Stations**
- **Chemical Rinse Station**

Classroom Policies

- **Hand-in Box**
- **Daily Announcements**
- **Labs, Assessments, & Grades**
- **Website –**
www.DrKohn.org
 - **Everything is always on the website!!!!**
 - *Inform me if it isn't!*

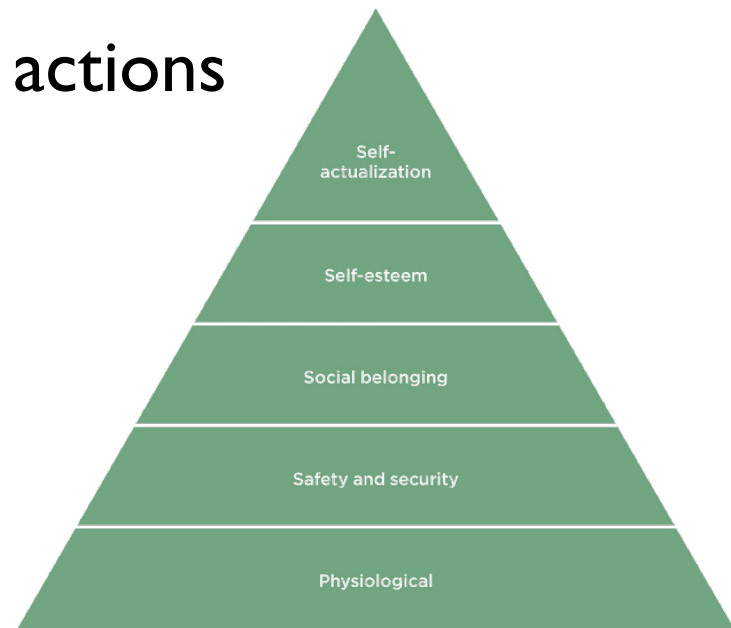


° THE 3 RULES



I) Support Learning

- **I. Everyone has an obligation to support safe learning & achievement for everyone in this room.**
 - If your actions hurt the ability of others to learn or to do their job, **you will be asked to leave.**
 - Examples of unacceptable actions include disruption of...
 - *Physical Safety*
 - *Psychological Well-being*
 - *Classroom Function*



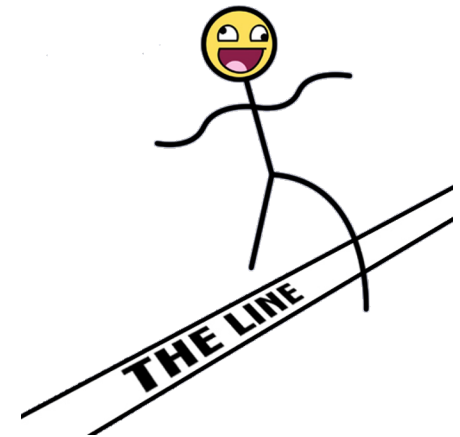
2) Support Each Other

- **2. Effective learning depends on a respectful environment.**
 - When someone is appropriately speaking to the entire class, you have an obligation to provide them with your full attention.
 - *This is true for both teachers and students.*
 - *Doing otherwise makes it harder for all of us to learn and do our jobs.*
 - Disrespecting someone based on gender, race, ethnicity orientation, religion, nationality, disabilities, age, etc. will result in immediate disciplinary action, including a phone calls to parents/guardians.



3) Don't Cross the Line

- **3. You are responsible for knowing what is acceptable and what is not.**
 - You know where the line is – do not cross it.
 - If you are unsure if something is acceptable, it probably isn't. Use common sense.



If we work together, both our jobs will be much easier.

Let's have a great year!